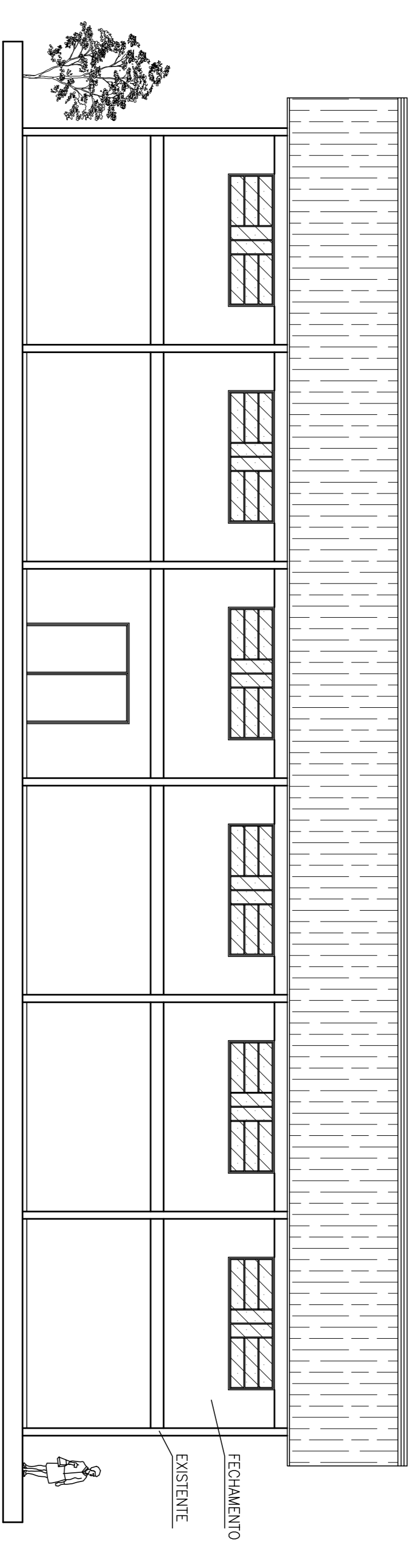
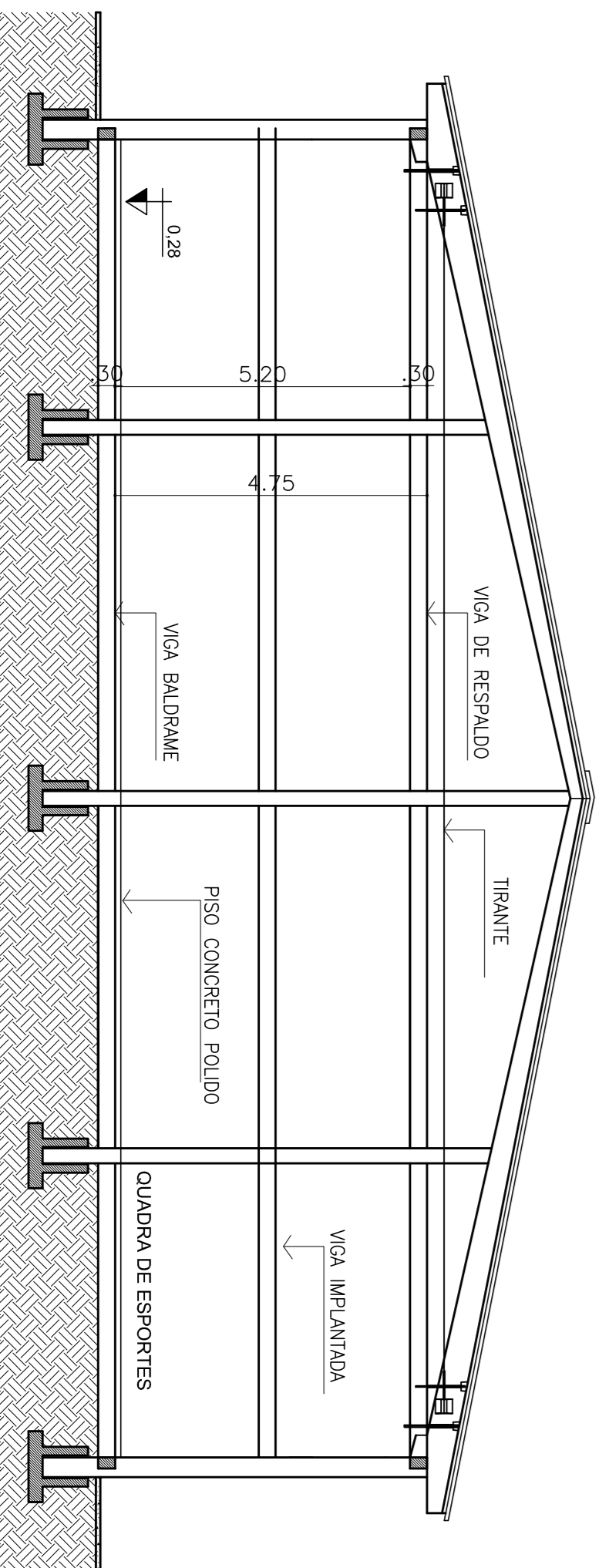
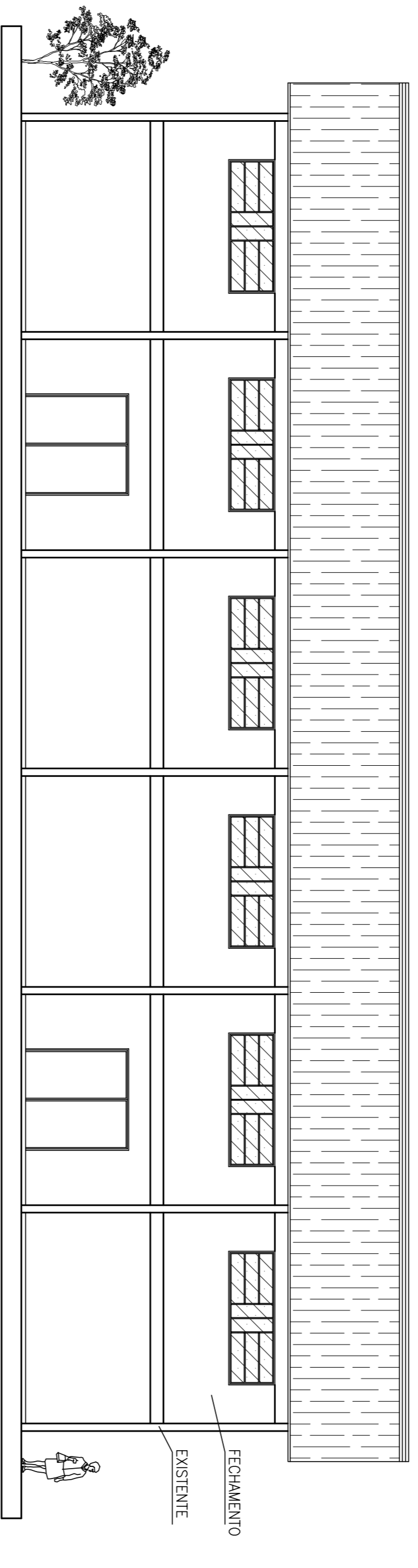


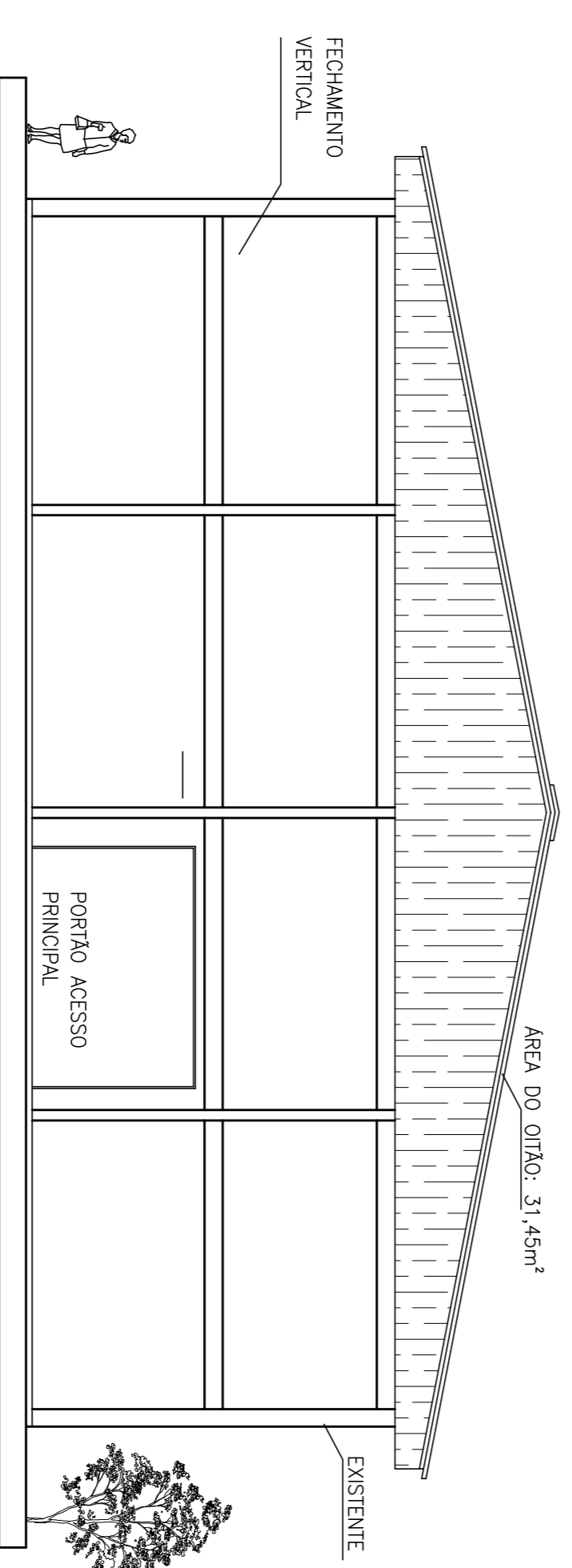
PLANTA BAIXA
ESCALA: 1/100



FACHADA 1
ESCALA: 1/100



FACHADA 2
ESCALA: 1/100



FACHADA 3
ESCALA: 1/100

CORTE AA'
ESCALA: 1/100

Sarcila Trintinaia Centenaro			
Arquiteta e Urbanista/CAU:A137218-1			
PLANTA BAIXA, FACHADAS E CORTES			
Prefeitura Municipal de Vista Alegre/RS	Prontidão: 2/3	Data: 17/04/2018	
Federação Quadra Esportiva Linha Perdinho	Escala: Indefinida	Área: 600,00 m²	
Tarcila Trintinaia Centenaro ARQUITETA E URBANISTA - CAU: A137218-1		Almar Antônio Zanatta PREFEITO MUNICIPAL	